



BrakeCheck

Portable Brake Testing Device For All Vehicles

The BrakeCheck is our portable, DVSA-approved Brake Tester.

The Bowmonk BrakeCheck is a fully self-contained, user-friendly, portable brake tester, used by workshops, government traffic authorities and Authorised Test Facilities (ATF's) around the world to record the braking efficiency and percentage of braking imbalance of all classes of vehicle from a Motorcycle to an HGV, in a matter of minutes.

The BrakeCheck is also approved by the DVSA for performing the quarterly voluntary brake tests now required as part of the interim safety inspections.

The Bowmonk BrakeCheck determines braking efficiency of both the Service Brake (Foot Brake) and Hand Brake by measuring the rate of deceleration from a speed of around 20 mph until the vehicle comes to rest. BrakeCheck is available in a variant which can also measure the brake efficiency of the Secondary Brake. Designed to be self-compensating, the instrument will indicate on the LED screen when it is positioned level enough to perform a brake test, with a generous tolerance to ensure that this is easy to achieve.

The unit indicates whether the vehicle pulls to the left or right during braking.

Test results can be viewed on the display panel or downloaded to a PC for saving or printing. A printed report can also be produced at the time of testing using the portable infra-red printer.

The device operates on a rechargeable lithium-ion battery pack and will power-down after a period of inactivity to conserve energy.

As an optional feature, BrakeCheck can include a built-in GPS receiver, with the latitude and longitude of the brake test location being printed on the receipt.

The BrakeCheck is available in a number of variants which cover all common and specialist vehicle types, including forklift trucks and quarry / plant vehicles. A variant supporting secondary brake testing is also available, plus a variant which displays separate results for the truck and trailer brake efficiencies.

FEATURES & BENEFITS

- Portable
- DVSA-approved
- Easy to Use
- For all Vehicle Classes
- Tests Service and Hand Brake
- Suitable for ABS-equipped Vehicles
- Portable Printer Available
- Download Data to PC
- Printer, Carry Case and Software Available
- Motorcycle Mounting Bracket Available
- Multiple Variants for Different Vehicle Types
- Optional built-in GPS receiver 3-Axis Accelerometer
- Measures Peak Deceleration Front/Rear
- Measures Average Deceleration Front/Rear
- Measures Peak Acceleration Left/Right
- Vehicle pulls Left/Right indication and value
- Calculates Brake Efficiency
- Calculates Stopping Distance (displayed in meters or, by special request, feet)
- Calculates Test Speed (displayed in km/h or, by special request, mph)
- Can be used for Hand Brake Test
- Audio Signal
- Measures Ambient Temperature

- For BrakeCheck Geo only: Built-in GPS receiver
- Latitude and longitude of the brake test finish point are stated
- GPS facility can be enabled or disabled as required by the user. When enabled, the brake test cannot be started until a GPS fix is obtained.
- LED indicating GPS status, one of the following:
 - GPS disabled
 - Searching for GPS fix
 - GPS fix obtained & ready for test
- Battery charger supplied, with appropriate plug for destination country
- Operates for approximately 5 hours or approximately 120 tests on full charge
- Can be used after 5 minutes of charging
- Battery charge indicator
- Automatic level compensation
- Simple LED indicator system

SYSTEM SPECIFICATIONS

Accuracy	Accurate to +/- 0.01g
Size	170 x 80 x 35 mm
Weight:	0.4kg (400g)
Power Supply:	Rechargeable AA Batteries x4
Operating Current:	<20 mA
Standby Current:	<5 mA

ENVIRONMENTAL TESTS

Electrical Tests Passed for CE Marking Requirements

MODEL VARIANTS

BOW801 – BrakeCheck

Stores 1 Service Brake & 1 Hand Brake test into memory.

BOW801KIT - BrakeCheck Kit

Includes a BOW801 BrakeCheck, a wireless printer, a spare printer paper roll, a carry case and a USB stick with documentation.

BOW801S - BrakeCheck with Secondary Test

Stores 1 Service Brake, 1 Secondary Brake & 1 Hand Brake test into memory.

BOW801L - BrakeCheck FLT (Forklift Truck)

Stores 1 Service Brake, 1 Hand Brake test into memory. But works to take account of slow speed and tilt of forklift truck vehicles

BOW803 - BrakeCheck Plus

Stores 99 Service Brake & 99 Hand Brake tests into memory.

BOW803G - BrakeCheck Geo

Built-in GPS receiver. Stores 99 Service Brake & 99 Hand Brake tests into memory.

BOW812- BrakeCheck4Quarries

tests the parking brake via an inclined brake test (i.e. checking that the parking brake keeps the vehicle stationary on an incline rather than measuring deceleration of the vehicle itself). It is also able to prompt the user to enter the condition and type of surface on which the brake test will be carried out.

BOW820- BrakeCheck TT (Truck & Trailer)

Stores 99 Service Brake, & 99 Hand Brake & 99 Trailer Brake Tests into Memory.

The BrakeCheck TT (Trailer Test) is very similar to the standard BrakeCheck unit, but has the facility to display separate results for the truck and trailer braking efficiencies.

ACCESSORIES

BOW805 – IR Printer

This wireless infrared printer, enclosed in a ruggedized rubber casing, allows the BrakeCheck to print brake test results after each test. The printer is supplied with a charger, with an appropriate plug for the destination country.

BOW813 – Rugged Carry Case

A sturdy carry case for the BrakeCheck and its charger, which also accommodates the BOW805 wireless printer (& its charger), a spare printer paper roll, and a USB stick. Note - part code BOW813 is for the carry case only. A complete kit, including BrakeCheck and printer, can be ordered under part code BOW801KIT..

BOW811 – Handle Bar Bracket & Clamp

The handle bar bracket & clamp allows the BrakeCheck to be securely mounted to the handlebar or front bull bar of a motorcycle or quad/ATV in order to carry out brake tests. The combined BrakeCheck with handle bar bracket & clamp (part codes BOW801 & BOW811) is fully DVSA-approved for the testing of brakes on these types of vehicle (Class I & Class II), including for vehicles with ABS or linked braking systems.

BOW810 – BCPrint Software

Downloadable software to view and save all results from all BrakeCheck variants, this can be printed on your own desktop printer or saved to a local drive/network, Note this will only work on Windows operating systems.

"We have been using the Bowmonk BrakeCheck for years on all our fleet vehicles, it saves us having to lose our lorry for a full day to leaving them at an ATF which cost the company a full day's revenue, now we can do all our tests on site and at our own convenience. We have saved thousands of pounds a year."

Paul Bailey,
Fleet Workshop Manager, Tarmac

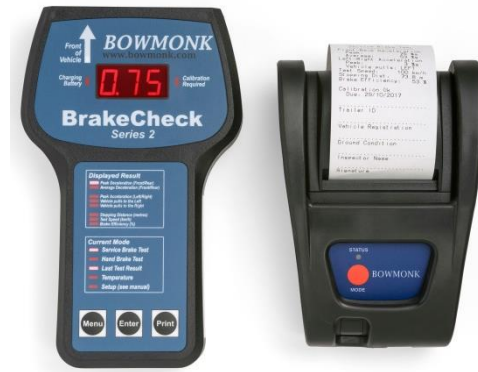
"We use the BrakeCheck in all our depots for a number of years now, they are easy to use and very robust, reliability is key to our equipment as road tests are a daily occurrence and without a decelerometer we can't do that test."

Terry Roughton,
Depot Manager, Kwik Fit

ADDITIONAL IMAGES



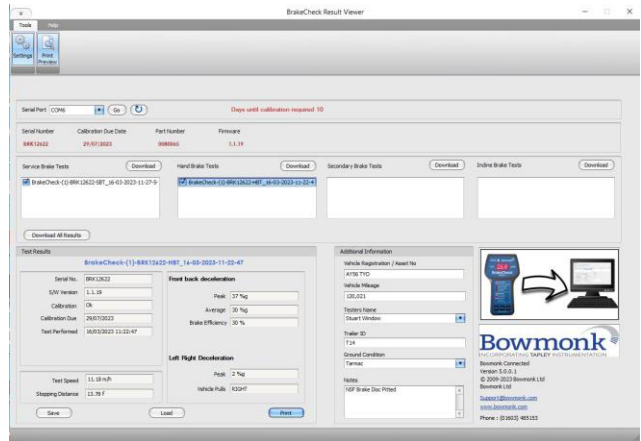
BrakeCheck



BrakeCheck with Optional Printer



BrakeCheck Kit



BCPrint Software



BrakeCheck with Motorcycle Bracket

```

=====
BrakeCheck
=====
Serial No:  BRK18001
S/W Version: 1.1.13

Company ID:
BOWMONK LTD

Log memory:  1

Test Performed:
13:19:44 09/12/2015
Timezone: GMT ( 0000 )

Service Brake Test
=====
Front-Back deceleration
Peak:      58 %g
Average:   36 %g
Left-Right Acceleration
Peak:      1 %g
Vehicle pulls: RIGHT
Test Speed: 16 km/h
Stopping Dist: 2.8 m
Brake Efficiency: 35 %

Calibration Ok
Due: 29/11/2017

Trailer ID .....
Vehicle Registration .....
Ground Condition .....
Inspector Name .....
Signature .....
    
```

Sample print-out